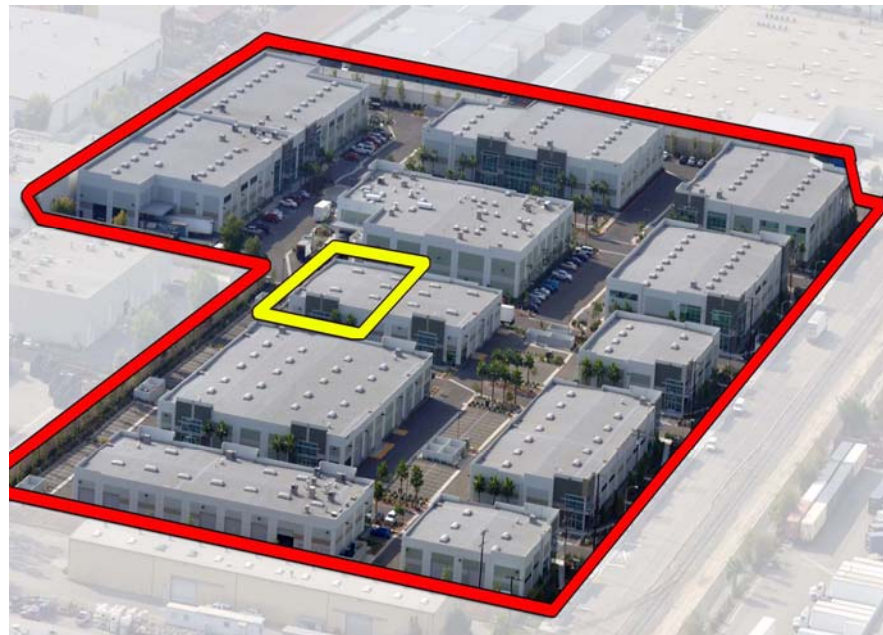


# Kimberly Business Center

## NEW INDUSTRIAL BUILDINGS FOR SALE

### 9,469 SQUARE FEET



PHASE II

1516 KIMBERLY AVENUE  
FULLERTON, CALIFORNIA

### FEATURES

(Building 12)



- New High Image Business Park
- ±1,358 Square Feet of Office Space
- 2 Ground Level Doors
- Secured Yard Area\*
- 400 Amps 120/208 Volt Electrical
- Fully Fire Sprinklered
- 18' Warehouse Clearance
- Excellent Freeway Access to the 91, 57 & 5 Freeways

[www.KimberlyBusinessCenter.com](http://www.KimberlyBusinessCenter.com)



For further information, please contact:

**Mitch Zehner**  
MZehner@voitco.com  
Lic #00882464

**Seth Davenport**  
SDavenport@voitco.com  
Lic #01413387



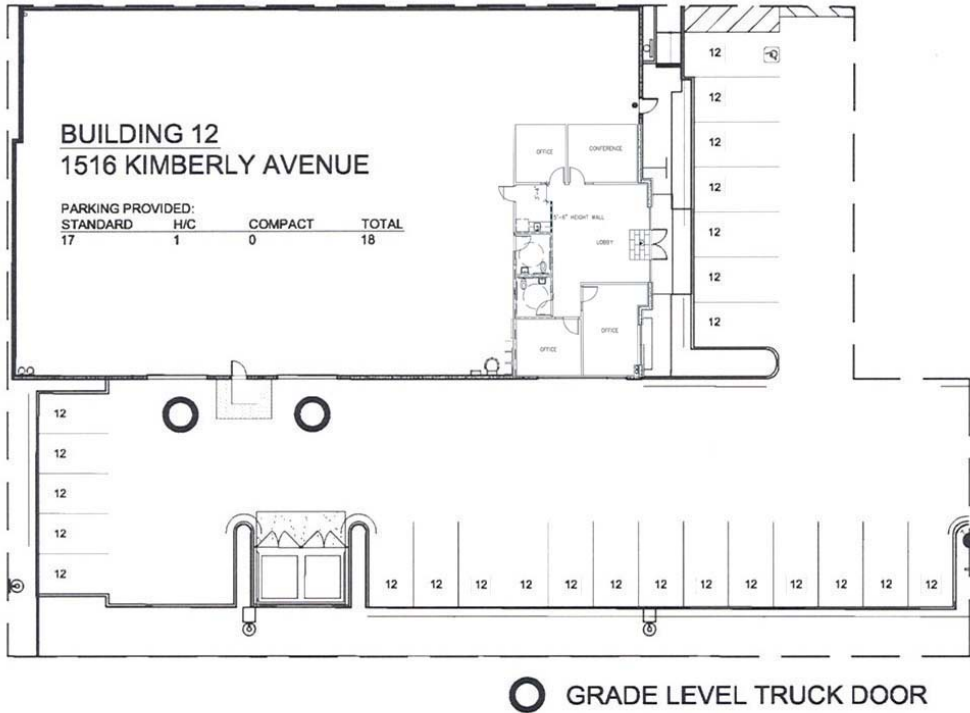
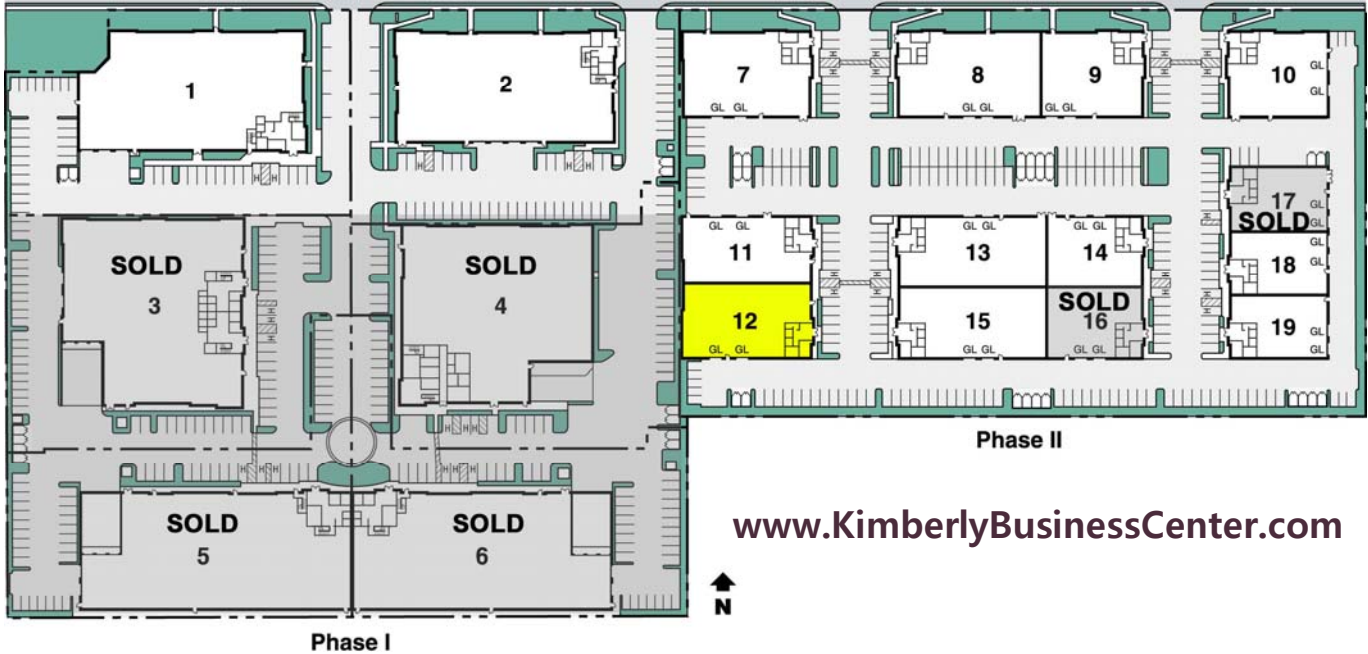
714.978.7880

[www.voitco.com](http://www.voitco.com)

3500 W. Orangewood Ave.  
Orange, CA 92868-1642

# 1516 Kimberly Avenue • Fullerton • California

KIMBERLY AVE.



For further information, please contact:

**Mitch Zehner**  
MZehner@voitco.com  
Lic #00882464

**Seth Davenport**  
SDavenport@voitco.com  
Lic #01413387



REAL ESTATE GROUP **714.978.7880** [www.voitco.com](http://www.voitco.com)

3500 W. Orangewood Ave.  
Orange, CA 92868-1642

The information contained herein has been obtained from sources we deem reliable. While we have no reason to doubt its accuracy, we do not guarantee it.